

UniFi® | SECURITY GATEWAY

Enterprise Gateway Router with Gigabit Ethernet

Models: USG, USG-PRO-4

Advanced Security, Monitoring, and Management

Sophisticated Routing Features

Integrated with UniFi® Controller Software



Affordable Enterprise Network Security

Ubiquiti Networks introduces the UniFi® Security Gateway, which extends the UniFi Enterprise System to encompass routing and security for your network.

The UniFi Security Gateway combines reliable security features with high-performance routing technology in a cost-effective unit.

Two models are available:

- **USG-PRO-4** Rack-mountable form factor with fiber connectivity options and a dual-core, 1 GHz processor for maximum hardware-accelerated performance.
- **USG** Wall-mountable form factor with a dual-core, 500 MHz processor for standard hardware-accelerated performance.

Powerful Firewall Performance

The UniFi Security Gateway offers advanced firewall policies to protect your network and its data.

Convenient VLAN Support

The UniFi Security Gateway can create virtual network segments for security and network traffic management.

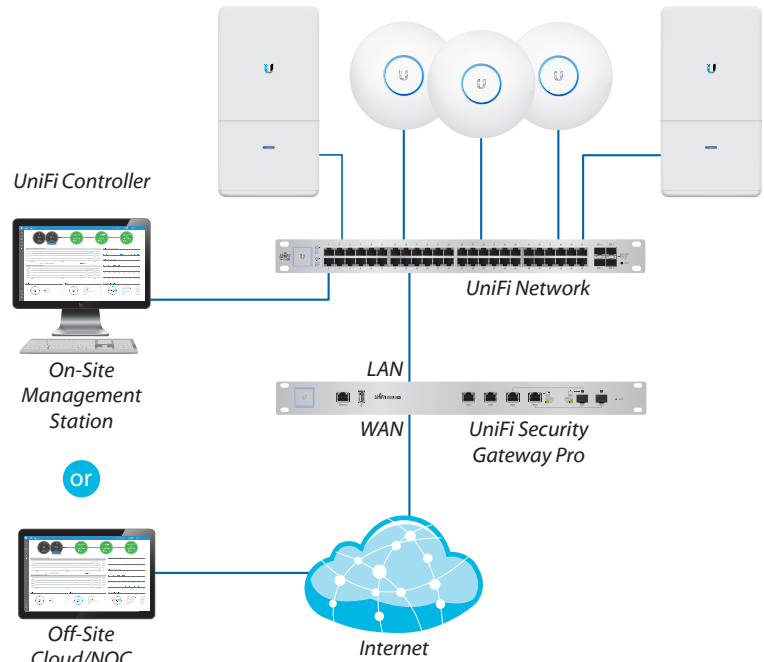
VPN Server for Secure Communications

A site-to-site VPN secures and encrypts private data communications traveling over the Internet.

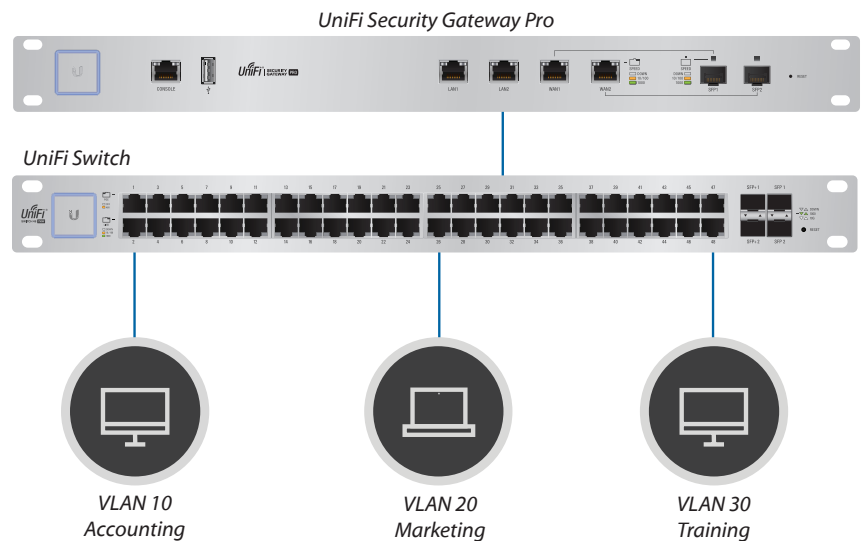
QoS for Enterprise VoIP and Video

Top QoS priority is assigned to voice and video traffic for clear calls and lag-free, video streaming.

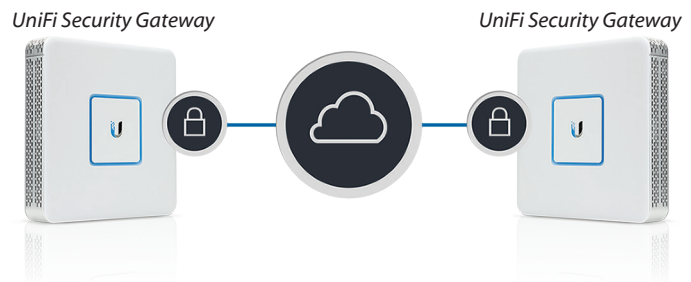
The UniFi Security Gateway is deployed in the same manner as UniFi Access Points for wireless networking. Use the intuitive UniFi Controller to conduct device detection, provisioning, and management.



Example of a UniFi Enterprise System



Network Segmentation with VLAN



Site-to-Site VPN Tunnel

UniFi Controller

Introducing the new UniFi Controller software featuring a refreshed UI and support for the next generation of UniFi devices.

Improved User Experience

Redesigned to be more intuitive and easier to navigate, the new UI raises the bar for enterprise network management efficiency. Important network details are logically organized for a simplified, yet powerful, interface.

Packed with Features

Use the UniFi Controller to provision thousands of UniFi APs and UniFi Security Gateways, map out networks, quickly manage system traffic, and provision additional UniFi devices.

Network Overview

A comprehensive overview of your Network Health is readily available in the new dashboard. Monitor your network's vitals and make on-the-fly adjustments as needed.

Detailed Analytics

Use the configurable reporting and analytics to monitor large user groups and expedite troubleshooting. Advanced search and sorting capabilities make network management more efficient.

Multi-Site Management

A single UniFi Controller running in the cloud can manage multiple sites: multiple, distributed deployments and multi-tenancy for managed service providers. Each site is logically separated and has its own configuration, maps, statistics, guest portal, and administrator read/write and read-only accounts.

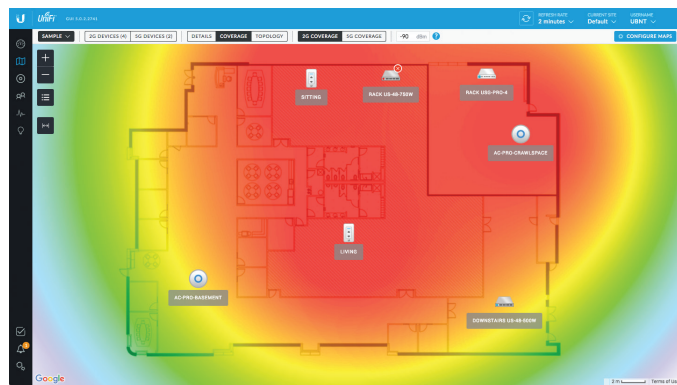
LAN/WLAN Groups

The UniFi Controller can manage flexible configurations of large deployments. Create multiple LAN and WLAN groups and assign them to the respective UniFi devices.



Dashboard

UniFi provides a visual representation of your network's status and delivers basic information about each network segment.



Maps

Upload a map of your location(s) or use Google Maps to represent the areas where your UniFi devices are located.

DEVICE NAME	IP ADDRESS	STATUS	MODEL	VERSION	UPTIME	ACTIONS
Rack USG-Pro-4	192.168.1.1	CONNECTED	UniFi Security Gateway AP	4.3.11.4832827	3d 58m 45s	LOCATE RESTART
Arlo-US-6-150W	192.168.1.233	CONNECTED	UniFi Switch 16 POC-150W	3.5.1.4038	39d 18m 45m 7s	LOCATE RESTART
Downhaul-US-48-500W	192.168.1.131	CONNECTED	UniFi Switch 48 POC-500W	3.5.1.4038	4d 23m 55m 7s	LOCATE RESTART
Wiredhaul-US-48-750W	192.168.1.246	CONNECTED	UniFi Switch 48 POC-750W	3.5.1.4038	3d 23m 12m 13s	LOCATE RESTART
Rack US-48-750W	192.168.1.8	CONNECTED	UniFi Switch 48 POC-750W	3.5.1.4038	4d 23m 55m 27s	LOCATE RESTART
Powerhaul-US-6-150W	192.168.1.304	CONNECTED	UniFi Switch 6 POC-150W	3.5.1.4038	3d 8m 12m 17s	LOCATE RESTART
AC-Branch	192.168.1.201	CONNECTED	UniFi Switch 8 POC-150W	3.5.1.4038	4d 23m 55m 4s	LOCATE RESTART
AC-LITE	192.168.1.162	CONNECTED	UniFi Switch 8 POC-150W	3.5.1.4038	3d 23m 17m 32s	LOCATE RESTART
AC-LR-Basement	192.168.1.137	CONNECTED	UniFi Switch 8 POC-150W	3.5.1.4038	4d 23m 54m 6s	LOCATE RESTART
44-Prj-P02-0433	192.168.1.197	CONNECTED	UniFi Switch 8 POC-150W	3.5.1.4038	3d 23m 1m 32s	LOCATE RESTART
44-Prj-P02-0444	192.168.1.178	CONNECTED	UniFi Switch 8 POC-150W	3.5.1.4038	3d 19m 26m 8s	LOCATE RESTART
AC-Pro-Basement	192.168.1.7	CONNECTED	UniFi Switch 8 POC-150W	3.5.1.4038	4d 23m 55m 21s	LOCATE RESTART
44-Prj-P12-0287	192.168.1.200	CONNECTED	UniFi Switch 8 POC-150W	3.5.1.4038	4d 23m 55m 46s	LOCATE RESTART
Powerpod1-UAP-AC-Pro	192.168.1.182	CONNECTED	UniFi Switch 8 POC-150W	3.5.1.4038	3d 8m 7m 12s	LOCATE RESTART
AC-Pro-CoverSpace	192.168.1.134	CONNECTED	UniFi Switch 8 POC-150W	3.5.1.4038	3d 23m 17m 14s	LOCATE RESTART
Thermostat	192.168.1.235	CONNECTED	UniFi Switch 8 POC-150W	3.5.1.4038	3d 8m 7m 14s	LOCATE RESTART
Living	192.168.1.136	CONNECTED	UniFi Switch 8 POC-150W	3.5.1.4038	3d 8m 7m 34s	LOCATE RESTART
300mg	192.168.1.134	CONNECTED	UniFi Switch 8 POC-150W	3.5.1.4038	3d 8m 7m 34s	LOCATE RESTART
Master	192.168.1.138	CONNECTED	UniFi Switch 8 POC-150W	3.5.1.4038	3d 8m 7m 34s	LOCATE RESTART
Gar	192.168.1.139	CONNECTED	UniFi Switch 8 POC-150W	3.5.1.4038	3d 8m 7m 32s	LOCATE RESTART
Basement	192.168.1.140	CONNECTED	UniFi AP-Pro	3.5.1.4038	3d 8m 7m 29s	LOCATE RESTART
3d-AC-76-20-249	192.168.1.123	CONNECTED	UniFi AP-Outdoor	3.5.1.4038	3d 23m 22m 24s	LOCATE RESTART
Pro-remote2	192.168.1.144	CONNECTED	UniFi AP-Pro	3.5.1.4038	3d 8m 20m 24s	LOCATE RESTART
Pro-remote3	192.168.1.145	CONNECTED	UniFi AP-Pro	3.5.1.4038	3d 23m 16m 49s	LOCATE RESTART

Device Configuration

The Devices screen displays a list of UniFi devices discovered by the UniFi Controller. You can access each managed device for device details and configuration.

UniFi® SECURITY GATEWAY PRO

Model: USG-PRO-4

The USG-PRO-4 offers optional SFP ports for fiber connectivity to support backhaul applications.

- (2) 10/100/1000 RJ45 Ports
- (2) 10/100/1000 RJ45/SFP Combination Ports
- (1) RJ45 Serial Console Port
- Rack-Mounting Capability
- Layer 3 Forwarding Performance
- Packet Size of 64 Bytes: 2,400,000 pps
- Packet Size of 512 Bytes or Larger: 4 Gbps (Line Rate)



Front Panel



Back Panel

UniFi® SECURITY GATEWAY

Model: USG

The USG features a compact form factor and fanless operation for discreet integration.

- (3) 10/100/1000 RJ45 Ports*
- (1) RJ45 Serial Console Port
- Quiet, Fanless Operation
- Wall-Mounting Capability
- Layer 3 Forwarding Performance
 - Packet Size of 64 Bytes: 1,000,000 pps
 - Packet Size of 512 Bytes or Larger: 3 Gbps (Line Rate)

* VOIP port is available for port remapping in UniFi v5.



Top Panel



Front Panel

Specifications

UniFi Security Gateway Pro	
Dimensions	484 x 44 x 164 mm (19.06 x 1.73 x 6.46")
Weight	2.3 kg (5.07 lb)
Max. Power Consumption	40W
Power Supply	Internal AC/DC Power Adapter, 60W (24V, 2.5A)
Power Input	110 - 240VAC
LEDs	Status
System	Speed/Link/Activity
Data Ports	
Networking Interfaces	
Serial Console Port	(1) RJ45 Serial Port
Data Ports	(2) 10/100/1000 RJ45 Ports (2) 10/100/1000 RJ45/SFP Combination Ports
Layer 3 Forwarding Performance	
Packet Size: 64 Bytes	2,400,000 pps
Packet Size: 512 Bytes or Larger	4 Gbps (Line Rate)
Processor	Dual-Core 1 GHz, MIPS64 with Hardware Acceleration for Packet Processing
System Memory	2 GB DDR3 RAM
On-Board Flash Storage	4 GB
Certifications	CE, FCC, IC
Rackmount	Yes
Operating Temperature	-10 to 45° C (14 to 113° F)
Operating Humidity	10 to 90% Noncondensing



Specifications

UniFi Security Gateway	
Dimensions	135 x 135 x 28.3 mm (5.32 x 5.32 x 1.11")
Weight	366 g (12.9 oz)
Max. Power Consumption	7W
Power Supply	12VDC, 1A Power Adapter (Included)
Power Input	9 to 24VDC, Supported Voltage Range
LEDs	Status Power Speed/Link/Activity
Networking Interfaces	(1) RJ45 Serial Port (3) 10/100/1000 Ethernet Ports*
Layer 3 Forwarding Performance	1,000,000 pps 3 Gbps (Line Rate)
Packet Size: 64 Bytes	
Packet Size: 512 Bytes or Larger	
Processor	Dual-Core 500 MHz, MIPS64 with Hardware Acceleration for Packet Processing
System Memory	512 MB DDR2 RAM
On-Board Flash Storage	2 GB
Certifications	CE, FCC, IC
Wall-Mountable	Yes
Operating Temperature	-10 to 45° C (14 to 113° F)
Operating Humidity	10 to 90% Noncondensing

* VOIP port is available for port remapping in UniFi v5.

