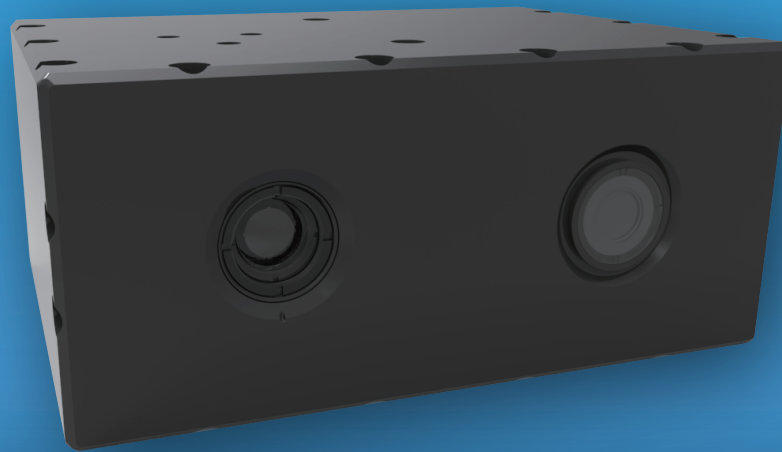


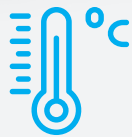
Intelligent Dual Vision Body Temperature Screener

T199



Dual Vision Intelligence

Dual vision configuration, intelligent and efficient personnel identification, more intuitive and easy to trace back.



Accurate temperature measurement

High precision sensor, accurate temperature measurement, accuracy ± 0.3 °C, intelligent and



Multi-Person Measurement

Multi-person temperature measurement, automatic face tracking, support for counting people, export of data reports



Fast Deployment

Fast and easy deployment, simple operation, and maintenance-free

Applications



Stations and Ports



Schools



Customs



Hospitals

Intelligent dual vision body temperature screener is a high-precision professional body temperature screening device, equipped with high-definition visible light camera and infrared thermal imager, supporting single and multi-person temperature measurement, and automatic face tracking. Realize accurate and rapid body temperature screening of personnel in the area, combined with the human body temperature adaptive algorithm, the temperature measurement accuracy is as high as $\pm 0.3^{\circ}\text{C}$, has been widely used in airports, stations, subways, hospitals, banks, office buildings and other public places and areas.



Temperature Measurement & Alarm	Measurement Range	28-45°C	
	Measurement Accuracy	$\leq \pm 0.3^{\circ}\text{C}$ (human body temperature 33 ~ 40°C)	
	Accurate Measurement	1.5~6.5m	
	Calibration	Automatic or Manual Calibration	
	Measured Persons	Single or Multiple Persons Supported	
	Intelligent Identifi	Automatic tracking human face and highest temperature.	
	Intelligent Statist	People measured counting, support temperature, date queries.	
	Temperature Abno	Alarm when higher than the highest temperature threshold.	
Thermal Camera	Sensor Technolog	Uncooled VOx Microbolometer	
	Max Image Size	336×256	
	NETD	<50 mK (0.050°C)	
	FOV	336*256-13mm: 25°×19° / 336*256-9mm: 35°×27° / 336*256-7.5mm: 45°×35°	
Visible Camera	Color Palette	Iron Red, Rainbow, etc.	
	Sensor Technol	1/2.9 inch CMOS	1/2.7 inch CMOS
	Pixel	2MP	5MP
	分辨率	1920×1080	2592×1944
	Low Light Level	Color: 0.1Lux @(F1.2) Black&White: 0.01Lux @(F1.2)	Color: 0.01Lux @(F1.2) Black&White: 0.001Lux @(F1.2)
	Wide Dynamic	Supported	
	Colour Balance	Supported	
	Digital Noise Red	3D digital noise reduction	
General	Operating Temp	0~50°C (for body temperature measurement 16 ~ 32°C)	
	Operating Humic	Operating Humidity	
	Dimension	180mm*135mm*80mm	
	Weight	<1.3 kg	